



Union Landing Historical Society

Quarterly Newsletter
Volume 4 Issue 1
Available at Brielle Borough Hall,
the Curtis House and mailed to U.L.H.S.
members each Feb/May/Aug/Nov

February 1st, 2010

www.briellehistory.org

Editor: Suzanne J. Shea

From the Holmquist Files...

by Natalie R. Holmquist

Captain Shem Bartley Pearce (known as Captain Bart Pearce) was well known in this area as a builder of fine boats and also for bringing the Harmsworth Trophy for motor boat racing to America twice.

He was also instrumental in influencing the State Transportation Department in its decision regarding the new railroad bridge which was to be constructed across the Manasquan River.

About 1912, the railroad company decided that a new bridge should be built to replace the old one. It wanted to build a solid bridge of earth with only a small draw for boats to pass through. The company told the State officials that the only kinds of boats up river from the bridge were row boats, small sail boats and canoes. When Captain Pearce heard about the proposal, he decided to prove the company wrong.

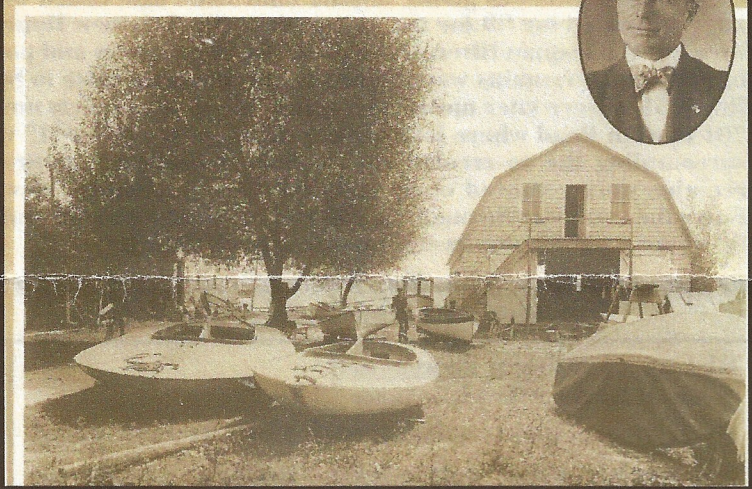
On the day the State officials came to inspect the site where the new bridge would be built, Captain Pearce had borrowed a large yacht from a friend and anchored it on the up river side of the old bridge.

When the State officials saw the yacht, they told the railroad company that the new bridge had to have a draw wide enough for vessels of that size to pass.

The Manasquan River Yacht Club members were so pleased with Captain Bart Pearce's action, that they had a large festive party in his honor, and proclaimed him a life member of the Club.

Captain Pearce Saves The Day

Below: Bart Pearce's boatyard from the Green Avenue site showing rowing boats built by him awaiting delivery.
Inset: Captain S. Bartley Pearce, master boat builder and champion motorboat racer.
Collection: The Holmquist family



Helen Holmquist, author of The Brielle Story and mother of Richard Holmquist, had a great interest in local history, which inspired her daughter-in-law, Natalie Holmquist, to start collecting newspaper clippings, articles and notations from various sources about the early days in this vicinity.

Thanks to this issue's contributors:
Mrs. Holmquist, Mr. Belding, Mr. DuPre & Mr. Shea
Keep up-to-date: <http://www.briellehistory.org>

Society News

by Ray Shea

Sales of our latest book Brielle - Saltworks to Suburb remain strong. Since the proceeds from the sale of the book directly benefit the society's programs, we thank all of our supporters who have purchased the book through the ULHS. If any of our readers wish to buy a copy of the book or know of someone who does, please purchase directly from the society as we realize the greatest profit from these sales. Books are always available at Brielle Borough Hall, either stop in during the Borough Historian's office hours on Monday evenings 7 - 9 pm or see Sherri Hopkins during regular business hours.

We are always looking to gather new and updated information for future publications. If there is something you feel was omitted from any of our publications, please e-mail me at rfshea@briellehistory.org. If you feel there is any information that you think is incorrect, we would like to know as well!

NEW MINI-BOOK SERIES!

Shortly, the ULHS book committee will begin work on a series of self-published booklets detailing historic events and locations around town. Each booklet will be about 5-7 pages in length and each one will cover a specific topic in greater detail than we were able to write about in our recent history books. All are welcome to support and participate in the project. We hope to be able to offer the booklets for sale beginning this Brielle Day. Our first meeting will be Tuesday morning March 9th at 10am, Boro Hall. For more information, please contact me at rfshea@briellehistory.org or by phone at 732-528-7432.

Some topics we expect to cover include: The Osborn Graveyard, Boxwood Cottage, the Union Landing area, Early Hotels and Resorts, the Brielle Fire Company, Sport Fishing in Brielle and more. New ideas are always welcome.

**BRIELLE HISTORY NOTE CARDS
& POSTCARD REPRINTS**
on sale - \$5/donation - great gift!

Your History Question Answered by John Belding, Borough Historian

Have your question answered! E-mail to info@briellehistory.org and watch for your answer in an upcoming U.L.H.S. Newsletter!

Q I have heard that many years ago there was an ancient cemetery near Rankin Road and Schoolhouse Road. Whose family? What happened to it?

A The Longstreet burial ground was destroyed in the early 1950s during the development of housing in the area. It was located in the middle of a field on the south side of Rankin Road, an area now between Rankin Road and Susan Lane. This was gently sloping land years ago, much of which was later excavated for fill for the approach to the then new Route 35 bridge over the Manasquan River. At the time, the grave stones and possibly some of the human remains were placed near a building close to Schoolhouse Road. They were later moved to a vacant piece of property now known as 701 Rankin Road where four corner stones with a letter "E" were placed surrounding the re-erected stones. Subsequently the stones and some remains were removed once again this time to Atlantic View Cemetery. Enter the cemetery through the driveway nearest Route 35 and about 150' in - there are five Longstreet stones in a row on the left.

Borough Historian's "It Was Only Yesterday" collection of historical vignettes:
<http://www.briellehistory.org/archive.htm>

Tuesday, March 9th - 10 am, Borough Historian's Office, Boro Hall, confirm 2010 officers, our first "mini-book" series meeting

Sunday, March 21st - 12 noon, "Mystery History Tour" to the Sea Girt National Guard Militia Museum

Saturday, April 24th - 2-4 pm, 11th Annual Antiques Road Show, Curtis House

Sunday, May 30th - Red, White & Blue Parade and 5th Annual Decoration Day Program, Historic Osborn Graveyard, Holly Hill Road

Friday, June 11th - 6 pm, Third Annual Flag Day Ceremony with Cub Scout Pack 63, at the 9-11 Memorial Garden, Riverview Drive

August 23rd - General Meeting, Brielle Day preparation, 7:30 pm Borough Hall

September 11th - Brielle Day-Sarsaparilla & Museum

MORE events are in the planning stage including events with the Squan Village Historical Society, a River Boat Trip and a tour of Boxwood Cottage!

Historical Osborn Graveyard

By John E. Belding, Project Coordinator

If you have observed the grave yard recently, you will again notice progress with the maintenance. With supervision, we continue to benefit from some folks who are required to perform community service. We are listed as a bonafide recipient for such help. You may also be interested to learn that we continue to beautify this historic site with carefully chosen trees. We recently planted a Golden Rain tree which has a pretty yellow flower from early June through July and will grow to about 30'. It is located just to the right inside the gate. Also note the recently planted Sour Gum (Tupelo) tree next to the rear walkway which will grow to about 25' with glossy dark green leaves turning red/purple in the fall. From the gate, look down to far left corner where there are three purple leafed multi stemmed Smoke trees or shrubs which will be pruned and grow to about 15' and will flower in late spring. Also inside the fence are four Cedars and four Hollies. Outside the fence there are additional Hollies. Along the road there are Copper Beech and Japanese Maple trees.

9-11 Memorial Garden

By E. David DuPre, Project Coordinator

Sometime during early November 2009 someone removed a police uniform patch from the Necrology List at the South Monmouth 9/11 Site. The patch was placed there by the family of Alphonse Niedermeyer of Wall Township to identify him as a member of the Port Authority of New York and New Jersey Police. We made an effort to recover the patch thru a 'Letter to the Editor' of the Coast Star in which we pleaded for its return with no questions asked. That effort failed.

At that point we enlisted the help of the Port Authority Police. They graciously offered to replace the patch with a new police uniform patch and will mail it to us shortly.

On the positive side, we were pleased to see the 9/11 victims remembered during the Christmas Season with an appropriate grave blanket at the memorial rock and Christmas wreaths marking the three triangular corners of the site. As a surprise an additional soft white blanket was spread over the entire site. No one knows who conceived this final tribute but observers agree it definitely came from Above.