



**THE CRIER - SEPTEMBER 2022**  
**UNION LANDING HISTORICAL SOCIETY**  
**OF BRIELLE**

**VOLUME 10, ISSUE 1**

**SEPTEMBER 2022**

**In this issue:**

From the President	1 / 2	Dan Lieb: NJ Shipwrecks	8-9
Social Media & Brielle Mugs for Sale	3	9-11 Memorial Park	10-11
Boro Historian's Desk	4-5	Osborn Burial Grounds	12-13
Then....and Now	6	ULHS 2022 Board	14
Fall 2022 Review	7	Brielle Library's Centennial	15 - 50
		Membership Form	51

**FROM THE PRESIDENT**

**We're back!**

**After staying on the sidelines during the Covid pandemic, we decided with a measure of caution, to open our doors for business at the end of August with our first meeting open to the public.**

**So, we kicked off things with our Annual Meeting on August 28<sup>th</sup>. Usually this meeting, where we elect our Board for the coming year, is scheduled for the first month or two of the year, but naturally, Covid pushed the meeting to later in the year.**

**Two main Agenda items for this meeting. First, we elected the following Board for 2022:**

- President: Jim Ham**
- 1<sup>st</sup> VP: Paul Harren**
- 2<sup>nd</sup> VP Virginia Loftin**
- Treasurer: Curtis Porcello**
- Secretary: Dan Turak**
- Director: MJ Barretta**
- Director: Ann Scott**
- Director: Bridgette Markuson**
- Director: Jackie Morgan-Stackhouse**
- Director: Bob Kehoe**
- Director: Cathy Cafone**
- Director: Tracy Porcello**

## **FROM THE PRESIDENT**

**(Continued from Page 1)**

I'd like to welcome Paul, Dan, Bob, Cathy to our Board and to welcome back an old Board member, Tracy Porcello. You'll also notice that we've expanded the number of Directors on the Board. The Historical Society decided to expand the number of Directors from three to a number at the discretion of the Board. This decision was made to accommodate the number of society members who have expressed an interest in being active in our activities.

Next, we also welcomed Dan Lieb as the speaker at our Annual Meeting. Dan is the President of the New Jersey Historical Divers Association. He gave a very well received talk on New Jersey Shipwrecks. Who would have guessed that there are literally thousands of shipwrecks lying off our shores? Dan highlighted all the most famous ones during his entertaining presentation.

Finally, just as 2019 was a special year for Brielle as we celebrated the town's Centennial and the 100<sup>th</sup> anniversary of the Police Department's founding, 2022 is also a very special year for the town. Both the Library and the Manasquan River Golf Club are celebrating their centennials this year. This issue of the Crier has a nice article on the history of the Library, while our year-end Crier will explore the history of the Golf Club.

It's great for your Historical Society to be back in business holding public events. We look forward to developing a series of programs over the coming months and to welcome everyone back to the town's historical family.

**Jim Ham**

**President, Union Landing Historical Society of Brielle**

**UNION LANDING  
HISTORICAL  
SOCIETY OF  
BRIELLE**

**601 Union Lane  
Post Office Box 473  
Brielle, NJ 08730**

Phone: (978) 317-5252  
jgham111@gmail.com



**Officers & Directors:**

**President:**

Jim Ham

**First Vice President:**

Paul Harren

**Second Vice President:**

Virginia Loftin

**Secretary:**

Dan Turak

**Treasurer:**

Curtis J. Porcello Sr.

**Directors:**

MJ Barretta  
Ann Scott  
Bridgette Markuson  
Jackie Morgan-Stackhouse  
Bob Kehoe  
Cathy Cafone  
Tracy Porcello

**Editor of "The Crier":**

Jim Ham

**HEAR YE...HEAR YE...ULHS HAS GONE SOCIAL....!!**

I have been working to keep all happenings of the ULHS updated and posted on our Facebook page and on our website (www.ULHSBrielle.org), along with pictures from our gatherings that have been held.

If you need to find out any info please check out our Facebook page (UNION LANDING HISTORICAL SOCIETY OF BRIELLE) or go on our WEBSITE (www.ULHSBrielle.org)...

For those Facebook users...PLEASE click on our Facebook landing page...**LIKE US**...and **SHARE IT** with your Friends and Family!! The MORE the Merrier!!

**We have a new website address!**

**We have transferred all of our website content to our new domain name: [ULHSBrielle.org](http://ULHSBrielle.org)**

**'GREETINGS FROM BRIELLE'**

**MUGS FOR SALE!!!**

During the Centennial Celebration, the ULHS for the first time offered 'Greetings from Brielle' mugs for sale. The price is \$12 for a mug, two for \$20, four for \$35.



To buy a 'Greetings from Brielle' mug, please contact:

**Jim Ham @ 978-317-5252**

## **From the Desk of Brielle's Borough Historian Jim Ham**

Several people have approached me recently interested in donating old items of historical significance to Brielle. These are treasures that open windows to earlier times in our historical town.

While Brielle doesn't have a Borough museum, as Borough Historian, I'm certainly interested in collecting ANY old items of historical interest (pictures, newspaper clippings, catalogues, books, etc.) that you have collecting dust in your attic, closet, garage etc.

I'd also love to get some old pictures of Brielle that I can use for the 'Then...and Now' section of the Crier. It is fantastic to see how the town has changed over the years.

Please let me know if you have any candidates!!!

If you have some item(s) that you'd like to donate, please reach out to me at either my email address (Jgham111@gmail.com) or cell phone (978-317-5252).

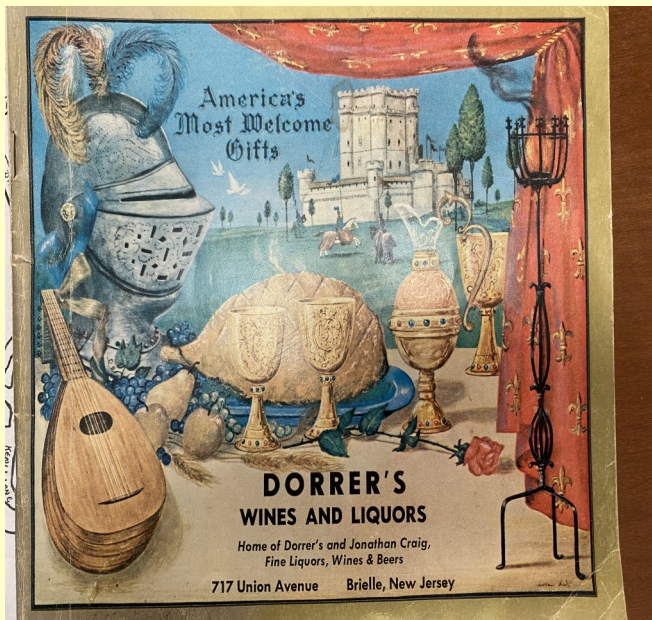
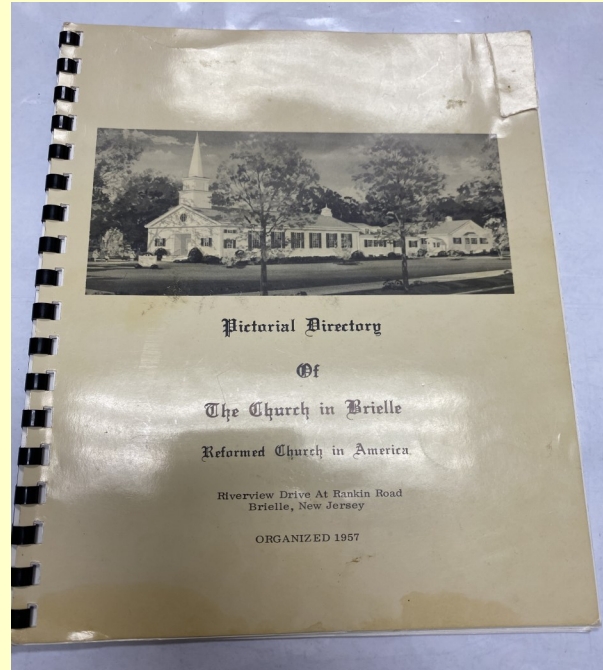
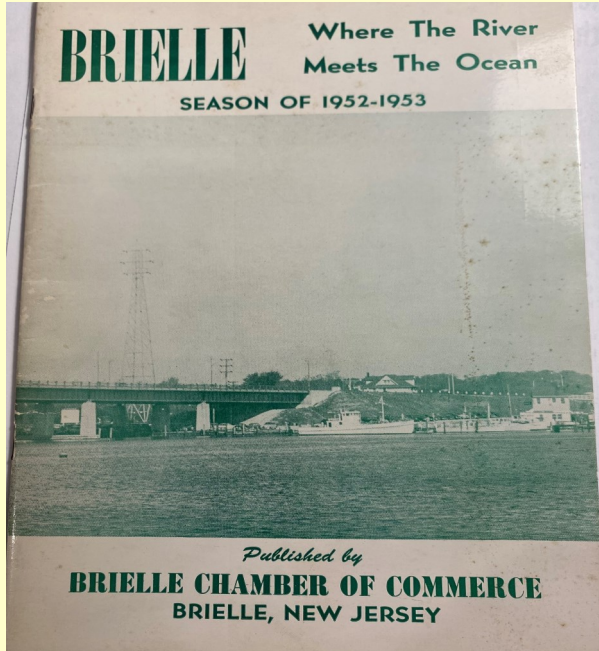
Following are several items that were recently donated:

### **RECENT DONATIONS:**

- **Junior League of Brielle Scrapbooks (4 Scrapbooks from the 1970's) - Marie Regan**
- **Pictorial Directory of The Church in Brielle—Jim Ham**
- **Dorrer's Wine and Liquors Catalogue—Susan Voorhees Montgomerie**
- **1952-1953 Brielle Chamber of Commerce Directory—Jim Ham**
- **Old Lyman Business Card (Paperweight) - Kurt & Carrie Becker**



# From the Desk of the Borough Historian Jim Ham





**Then.....and Now**  
**Brielle's Fire House....and former Borough hall**



Initially,  
Brielle's fire  
house was  
also the lo-  
cation of  
Borough  
Hall and the  
Police  
Headquar-  
ters

Today's ex-  
panded fire  
house





# Union Landing Historical Society of Brielle

2022  
Fall Review



**ULHS Annual Meeting –August 28, 2022**

**Dan Lieb—Presentation: "New Jersey Shipwrecks"**

For the past 300 years, the waters off New York and New Jersey have been a hub of maritime activity. Over that same period of time, thousands of vessels have sunk off our shores, with the loss of thousands of lives. Part of the vast "Graveyard of the Atlantic," hundreds of these wreck sites have been identified over the years, and many more have not. Dan Lieb, president of the New Jersey Historical Divers Association, Inc., will offer an overview of the more well-known wrecks visited by divers and fishermen..



**Dan Lieb, President of  
New Jersey Historical  
Divers Association**

**ULHS Annual Meeting –August 28, 2022**

**Dan Lieb—Presentation: "New Jersey Shipwrecks"**



Dan presenting a most interesting talk on the numerous shipwrecks just off our Jersey coast

The crowd listens to Dan's presentation



**Above pictures courtesy of the Coast Star**



## Brielle's 9/11 Memorial Site





## Brielle's 9/11 Memorial Site

### Remembering the Victims

# GOD BLESS AMERICA

## REMEMBERING AREA VICTIMS OF THE SEPT. 11, 2001 ATTACKS

New Jersey's toll of residents reported among the missing or confirmed dead as a result of the 9/11 terrorist attacks has been set as approximately 700, of which 143 were residents of Monmouth County. Thirteen were residents of our local area.

### WORLD TRADE TOWERS

Edward A. Brennan, *Sea Girt*

John E. Connolly Jr., *Wall*

Brian T. Cummins, *Manasquan*

Paul Furmato (Son of Joseph & Margaret Furmato, Brother of Mark Furmato, *Brielle*)

Thomas F. Hughes Jr., *Spring Lake Heights*

Paul H. Keating, *Spring Lake Heights*

Christopher E. Lunder, *Wall*

Richard B. Madden (Son-in-Law of John P. & Elizabeth McIntyre, *Brielle*)

Charles W. Mathers, *Sea Girt*

James J. McAlary, *Spring Lake Heights*

James T. Murphy, *Spring Lake Heights*

Alfonse J. Niedermeyer III, *Wall*

Robert W. O'Shea, *Wall*

### UNITED AIRLINES FLIGHT 93

Donald A. Peterson, *Spring Lake*

Jean Hoadley Peterson, *Spring Lake*

### UNITED AIRLINES FLIGHT 175

Dr. Frederick C. Rimmele III (Son of Frederick & Marilyn Rimmele Jr., *Brielle*)

*O my God, in Thee I trust, let me not be put to shame; let not my enemies exult over me.*

Psalm 25:2



**John Belding - Leader of the Osborn Graveyard Restoration Project**

**About to Lead a Tour of the Cemetery**





**The Osborn Graveyard Before its Restoration in 2000**



**The Osborn Graveyard After its Restoration in 2001**





## ULHS 2022 Board



**During the August 28, 2022 Annual Meeting, the 2022 ULHS Board was sworn into office**

**From left to right:**

Director, Cathy Cafone; Director, Bridgette Markuson; Director, Ann Scott; 2nd VP, Virginia Loftin; 1st VP, Paul Harren; Director MJ Barretta; President, Jim Ham (Missing: Treasurer, Curtis Porcello; Secretary, Dan Turak; Director Dan Kehoe, Director, Tracy Porcello; Director, Jackie Morgan-Stackhouse)

**Special Research Project:**

**The History of Brielle's Library**

**Jim Ham—Borough Historian**



## **Special Research Project:**

### **The History of Brielle's Library**

**Jim Ham, Brielle Borough Historian**

#### **INTRODUCTION**

The years after World War I were years of great change for Brielle. The town left Wall Township in 1919 and became an independent borough, Brielle's Police Department was started in 1919, the Manasquan River Golf Club was founded in 1922 and a woman from the Monmouth County Library met in the home of a newcomer to Brielle during 1922.

Mary Strong was 45 years old and had recently moved to Brielle. Despite her newcomer status, she was President of Brielle's Parent Teacher Association. Her visitor was Miss Eleanor Randall, who was establishing the Monmouth County Library system at this time.

Following is John Belding's, Brielle's second Borough Historian, account of this meeting and the subsequent founding of Brielle's library in his October 2006 edition of, "It Was Only Yesterday".

*"As happens frequently in our great town, private citizens seeing a need, step forward to address that need. And that is how our wonderful library got its start. Back in the very early days of our town, which was established in 1919, we had no library. We owe our current free library to the work and generosity of one woman, Mrs. Mary W. Strong. She established a library in her home on Longstreet Avenue in September 1922 with 50 books, a complete file of Century magazines and high hopes. Mrs. Strong was a resident of Brielle for only two years when she started this labor of love. She had no formal training as a librarian but had started the first library in Suffern, New York and then worked one year*

# The History of Brielle's Library

## The Early Days

*at the library in Point Pleasant. When an opportunity came to organize a system in Brielle, she seized it!*

*Miss Eleanor Randall was establishing the Monmouth County Library at this time. She broadcast an appeal for assistance, which Mary Strong answered. Together they planned to open a new venture in Brielle under the patronage of the Parent Teachers Association of which Mrs. Strong was President. They planned to place their books in the local grammar school. Miss Randall objected to this. She felt that while the children could be reached, no contact would be made with the adults of the community.*

*She came to the Strong home for some discussions and immediately fell in love with the large old home, known as "Applewood" and built circa 1850. She suggested this would be an ideal location for a library. She persuaded Mrs. Strong to agree with her. Thus, in September 1922, the Brielle library opened its door to the public. Located in the sun parlor of the Strong home, it met with immediate and hearty approval!*

*Mrs. Strong, mother of five young girls, was not only librarian and publicity agent for the new venture, but janitor as well. Each Thursday before the door opened a fire had to be lit, shelves dusted, new books arranged and files set out.*

*The walls were solidly covered from the floor to half their height with books. A large table in the center of the room was used to display recent acquisitions and also as a checking desk. The table had belonged to Mrs. Strong's father, Dr. Frank Williams of Trenton, who had used the table as an operating table. A huge settee stood in the corner by the entrance, of which every inch was covered with books. At that time, if the small library did not have a book desired by a patron, Mrs. Strong could procure it from either Freehold or Newark by drawing on the libraries.*

# The History of Brielle's Library

## The Early Days

*County or state libraries. In those early days, the month of March saw the peak of circulation.*

*For the first 18 years, Mrs. Strong not only supplied the home for the library but furnished the heat and light as well. Not to mention dipping into her purse for stationary, printed notices and materials for binding the books. In 1941, the borough finally came to her assistance by voting the library a yearly grant of \$250. Also in the early days, Mrs. Strong and her two daughters acquired looms and became accomplisher weavers. They were eventually asked to join the National Association of HandWeavers.*

*While in those days fiction was a two to one favorite, Brielle had the distinction of circulating proportionately more non-fiction than any other library in Monmouth County.*

The library continued to be located in Mrs. Strong's house until late 1952. In December 1952, the library moved to the Rankin farmhouse and subsequently moved to the basement of the old schoolhouse in June 1954. Finally, in April 1988, Brielle's library moved to a newly constructed home of its own in Brielle Park. Brielle's library, that started in 1922 in a private home of a dedicated Brielle citizen, Mary Strong, had finally completed its journey.



## The History of Brielle's Library

### Mrs. Mary W. Strong



**LIBRARIAN**—Mrs. M. W. Strong, Brielle librarian, checking a book for a reader.

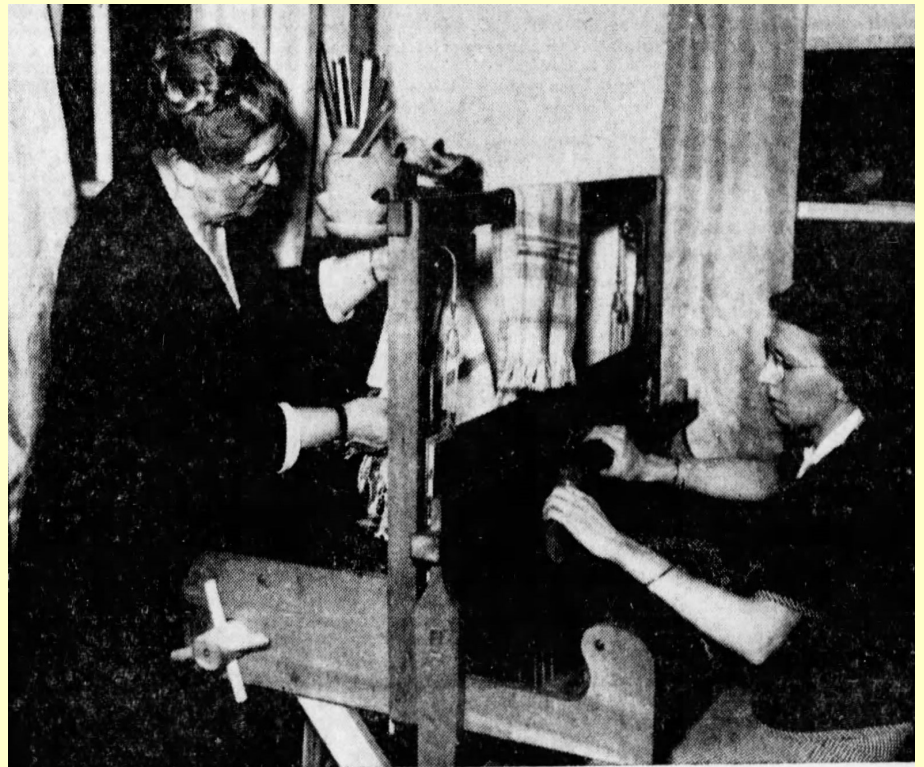
- Founder of Brielle's public library in September 1922 in the sun parlor of her home, Applewood, on Longstreet Avenue.
- Brielle's librarian for 32 years from September 1922 to February 1954.

# The History of Brielle's Library

## Mary Strong and Her Daughter at their Beloved Looms



**WEAVERS**—Mary W. Strong and her daughter, Polly, working at the looms in their home. Both weavers are in the act of passing the shuttle through the warp.



**INSPECTION**—Mrs. Strong inspects a completed scarf while her daughters weave suit material.



# The History of Brielle's Library

## Applewood

### Home of Brielle's 1st Library (1922—1952)



- Built circa 1850
- The home was originally the homestead of the Longstreet family
- Mrs. Mary Strong's home on Longstreet Avenue (#518)
- Home of Brielle's first library
- Library was located in the sun parlor of Applewood
- Library opened in September 1922
- Initially the library was only opened on Thursday
- Library opened with 50 books and a complete set of Century magazines
- Mrs. Mary Strong covers all the costs - heat, light and service - of operating the library



# The History of Brielle's Library

## Applewood Today



# **The History of Brielle's Library**

## **The Transition to a New Location**

As Brielle emerged from the second world war, change was in the air. A small, sleepy town by the river was about to start its transition from a farming community to a suburban community (See chart on Page #XX).

The school was outgrowing its home in the old schoolhouse (current Borough Hall) on Union Lane. So in 1949, Brielle's Board of Education (BOE) purchased the Rankin Farm, which adjoined the old schoolhouse on Union Lane, as a site for a new, expanded elementary school. The Rankin farmhouse initially remained vacant until the BOE could decide how to utilize this building. Pleas from local town organizations requested to use it as a community center with space for a library. In November 1951, Council asked the Brielle PTA to compile a list of organizations interested in using the building. As a result of this request, an agreement was reached whereby the BOE leased the building to Council with two rooms on the ground floor to be made available for use as a new location for Brielle's public library. Concurrently, the BOE used the farmhouse to house the town's kindergarten. So in December 1952, Brielle's public library made the move from Applewood to its new location in the Rankin farmhouse.

In 1952, Mary Strong was 75 years old and contemplating retirement. so she could move to live closer to her family out in California. So in 1953, Mrs. Strong took an extended vacation to visit her family in California. Mrs. Betty Taylor was appointed as a temporary librarian during 1953 while Mrs. Strong was on vacation. On February 23, 1954, the founder of Brielle's library, Mrs. Mary Strong submitted her resignation as Brielle's librarian. Betty Taylor continued as librarian on a volunteer, temporary librarian until she was appointed as Brielle's librarian on March 8, 1954.

Mrs. Mary Strong died during February 1975 near her family in Cupertino, California. She was 98 years old.



# **The History of Brielle's Library**

## **The Transition to a New Location (Cont'd)**

Very shortly after Brielle's library moved to its new location in the Rankin farmhouse, it needed to find a new location.

On March 23, 1954, the Library Committee was advised by Council that the Rankin farmhouse had been sold and would be immediately moved to its present location at the corner of Union Lane and Union Avenue (see picture on Page #XX). As a result, a new location for the library was urgently needed to be found. In June 1954, the library moved to its new home in Assembly Hall in the basement of the old schoolhouse. It would remain at this location for the next 34 years. Its ironic that Brielle's original library was located in Mary Strong's sun-parlor because both Mary Strong and Eleanor Randell felt that locating the library in a school building was not the optimal location for a library for the entire town.

During the years 1951 to 1955, a committee appointed by the Borough Council was responsible for the operations of the library. Shortly after the move to its new home in the old schoolhouse, on March 16, 1955 the library committee signed Articles of Incorporation and the library became an independent organization. In November 1955, the library adopted a Constitution and became governed by a Board of Trustees with Dr. Agnes Wayman as President. Finally, in April 1956 the Brielle Library Association was formed with 163 charter members.

# The History of Brielle's Library

## Rankin Farmhouse

### Home of Brielle's 2nd Library (1952—1954)



- In 1949, Brielle's Board of Education (BOE) purchased the Rankin Farm, the land adjacent to the old schoolhouse (current Borough Hall), for use as the future site of Brielle's new school building
- Agreement was reached in 1952 for the BOE to lease two rooms in the Rankin farmhouse to the town council for use as Brielle's public library
- In December 1952, the library opens in two rooms on the ground floor of the Rankin farmhouse
- In March 1954, the Library Committee is informed that the Rankin farmhouse had been sold and the library would need to be quickly relocated
- Note: the Rankin farmhouse is subsequently moved to the corner of Union Lane and Union Avenue, across from Borough Hall, where today it still stands

## The History of Brielle's Library

### Rankin Farmhouse and Old Schoolhouse



Viewed from the rear of Rankin farm on the south side of Union Lane, the Rankin farmhouse (left) and the old Schoolhouse (right) are seen off in the distance. The Rankin farm became the location of Brielle's current elementary school.



## The History of Brielle's Library

### Moving the Rankin Farmhouse



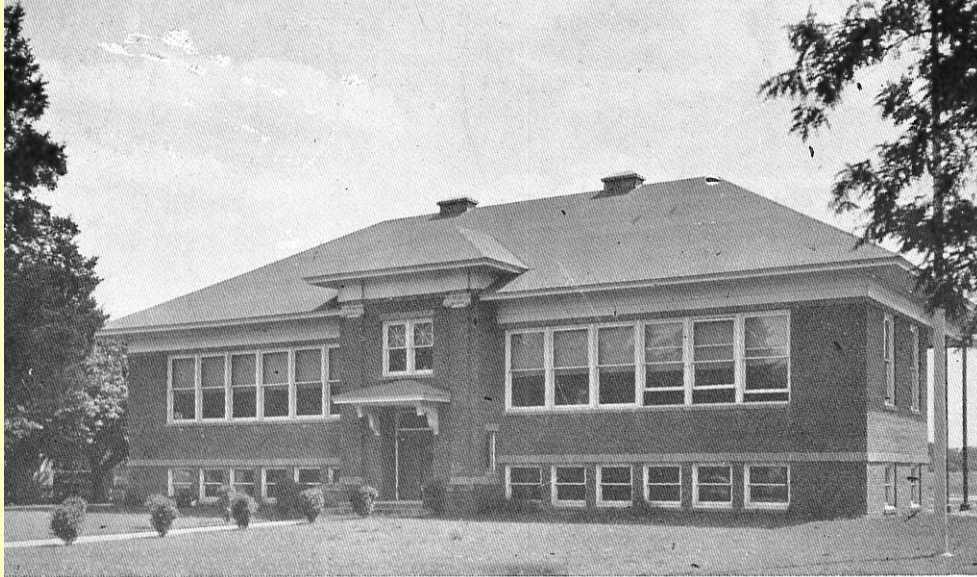
**MOVING PROBLEM**—It took the combined efforts of house movers, Jersey Central Power and Light Company linemen, and Brielle police about three hours yesterday to move the Rankin house, former Brielle library and kindergarten, from the west to the eastside of Route 71 to its new foundation on Union Lane. Linemen lifted up 50,000-volt-power lines, so Bradley Beach house mover Harty Poland's men could get the house across the highway. Meanwhile, police, not shown above, held up north-and-south-bound traffic. The house was bought recently by Councilman Jack A. Groz, who had it moved to his property on Union Lane. (Press Photo)



# The History of Brielle's Library

## Old Schoolhouse

### Home of Brielle's 3rd Library (1954—1988)



Public School, Brielle, N. J.

- In June 1954, Brielle's Library moves into Assembly Hall in the basement of the old schoolhouse (current Borough Hall)
- In March 1955, the Library Committee signed Articles of Incorporation
- In November 1955, the Library Committee adopted a Constitution and became a Board of Trustees
- Dr. Agnes wayman is elected as the first President of the Board of Trustees
- In July 1986, Brielle's Borough Council adopted a \$380,000 bond ordinance to finance a new library building...a year later the bond was increased by \$75,000 to \$455,000



## **The History of Brielle's Library Planning Starts for a New Library Building**

As Brielle's population surged, the demands on the library mirrored this growth. As a result, the library began to outgrow its space in the basement of the old school building. Beginning around 1968, Brielle started purchasing land on Union Lane between South Street and Legg Place with Green Acres funds that was to become Brielle Park. Both the Loughran Gardens and Curtis farm properties were to become the centerpieces of this new park.

Simultaneously, discussions were held focused on various options and locations for a new, larger library building. Bill Loughran, owner of Loughran Gardens, suggested that the retail building on his property would be a great location for Brielle's new library. These discussions focused on finding a location for the new library continued into the 1980's. Eventually, around 1985 the vacant retail building on the site of the former Loughran Gardens in Brielle Park was selected to become the location of Brielle's new library building.

As a result, in 1985 with a site selected, planning for the new library building began in earnest. Discussions quickly focused on securing the financing for the new building. During the third quarter of 1986, the Borough approved \$380,000 for the conversion of the former Loughran Gardens retail building into the new public library. A local architect, Richard Graham, was selected to design the new building in which he incorporated some elements of the old building in his design. The groundbreaking ceremony for the new library building was held around June 1987. Construction progressed through the second half of 1987 into the early months of 1988. Finally, on April 17, 1988 Brielle's new library building was dedicated at a ceremony well attended by the friends of the library.

## **The History of Brielle's Library Planning Starts for a New Library Building**

With the completion of the Garden State Parkway in 1957, Brielle population starts to explode. Brielle's population doubles from 1950 to 1960 and grows by more than 50% from 1960 to 1980. The following chart highlights Brielle's population growth from 1920 to 2000:

<b><u>YEAR</u></b>	<b><u>BRIELLE'S POPULATION</u></b>
<b>1920</b>	<b>392</b>
<b>1930</b>	<b>684</b>
<b>1940</b>	<b>962</b>
<b>1950</b>	<b>1,328</b>
<b>1960</b>	<b>2,619</b>
<b>1970</b>	<b>3,594</b>
<b>1980</b>	<b>4,068</b>
<b>1990</b>	<b>4,406</b>
<b>2000</b>	<b>4,893</b>

# The History of Brielle's Library From Loughran's Gardens to Brielle's New Library...



- By the late 1950's, Loughran's Gardens was operating as a florist/garden center at Union Lane and South Street in Brielle
- Loughran's Garden contained a retail store and a series of greenhouses
- During February 1963, Loughran's Gardens experienced a major fire and that significantly hampered operations
- By 1968, the Loughran Gardens buildings were slated to be demolished as part of Brielle's Green Acre Park project
- William Loughran suggested that his former retail building could be renovated for use as a new location for Brielle's library

## The History of Brielle's Library Loughran Gardens Operations



Old greenhouses on Loughran Gardens property



Aerial view of Loughran Gardens and Brielle Park



# The History of Brielle's Library

## Loughran's Gardens



Inside one of the  
greenhouses at  
Loughran's Gar-  
dens

Owner Bill  
Loughran (R) and  
his father (L)  
touring a green-  
house at  
Loughran's Gar-  
dens

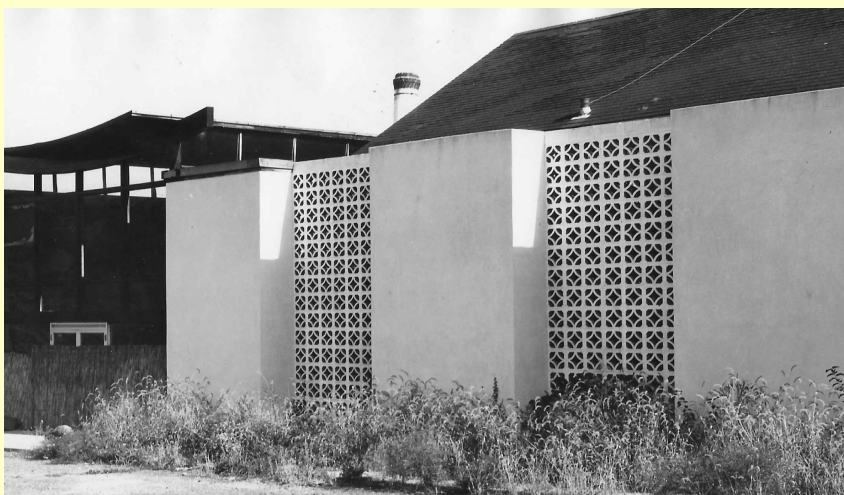


**The History of Brielle's Library**  
**Loughran's Garden's Retail Building that was**  
**to be Transformed into the new Library Building**



Loughran Gardens re-tail building with greenhouse and shed off to the left

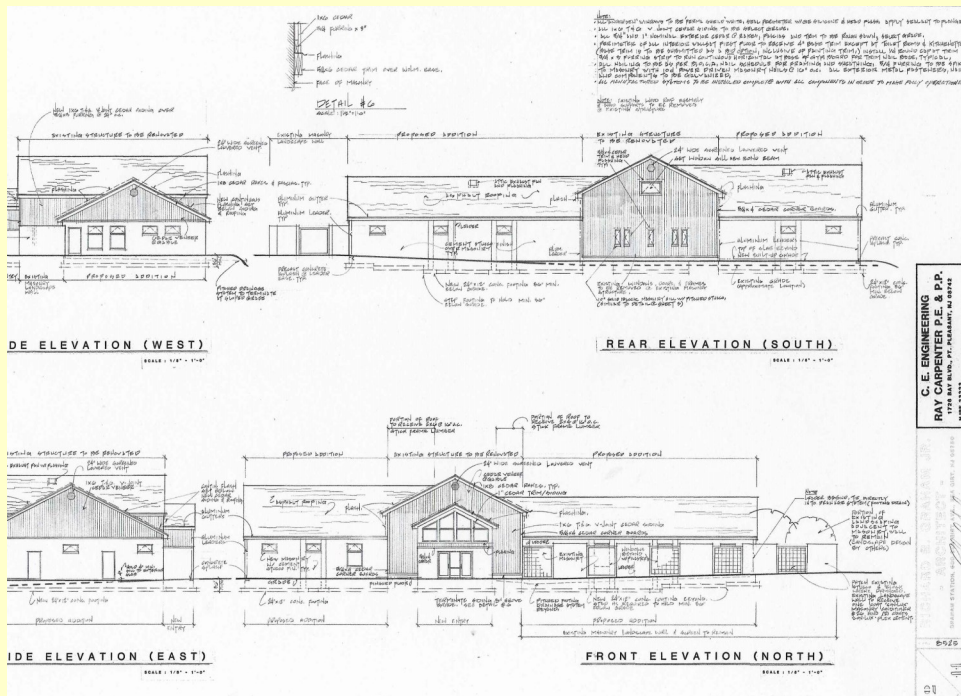
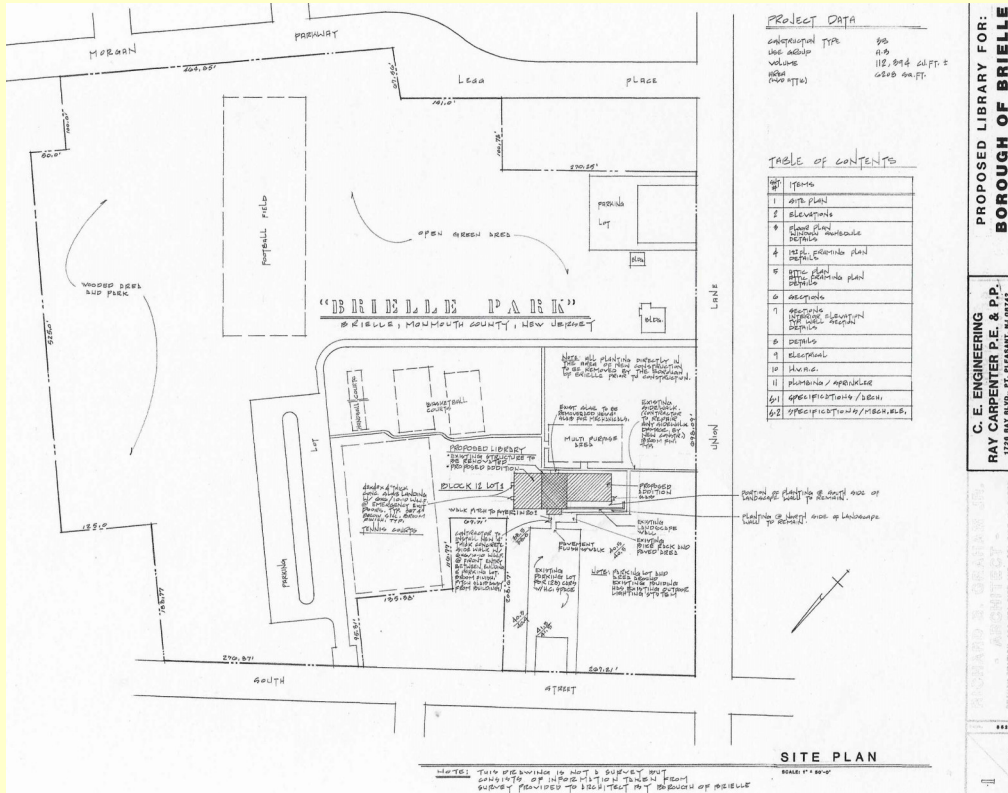
Retail building after the greenhouses were demolished (Note Brielle's old water tower in background)



Retail building with breeze block that were incorporated into design of the new library building



# The History of Brielle's Library Brielle's New Library Building Architect's Drawings

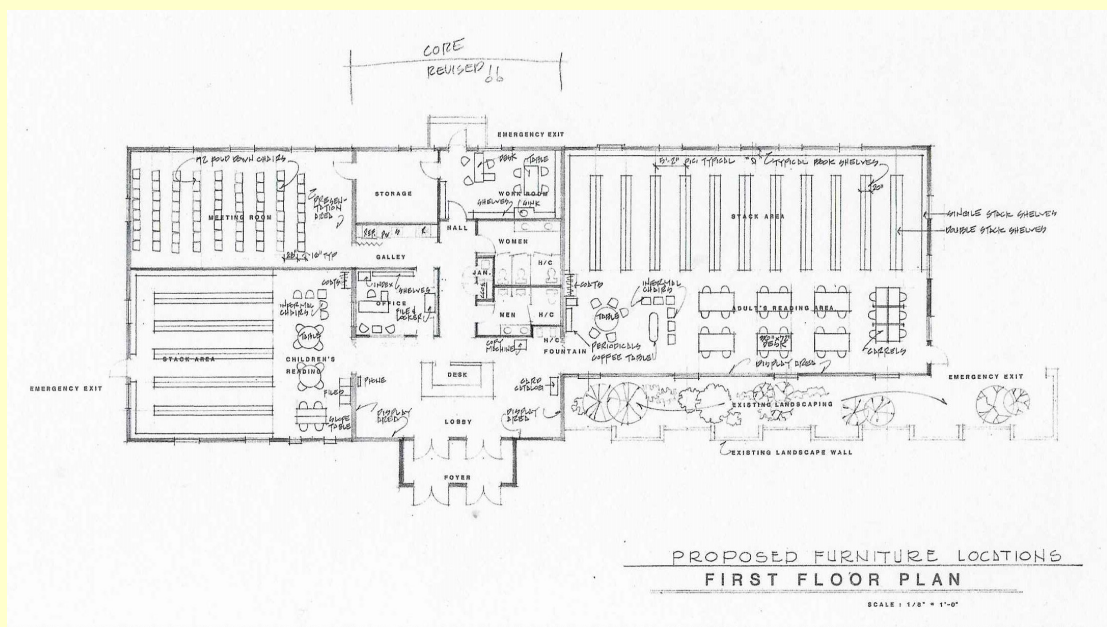
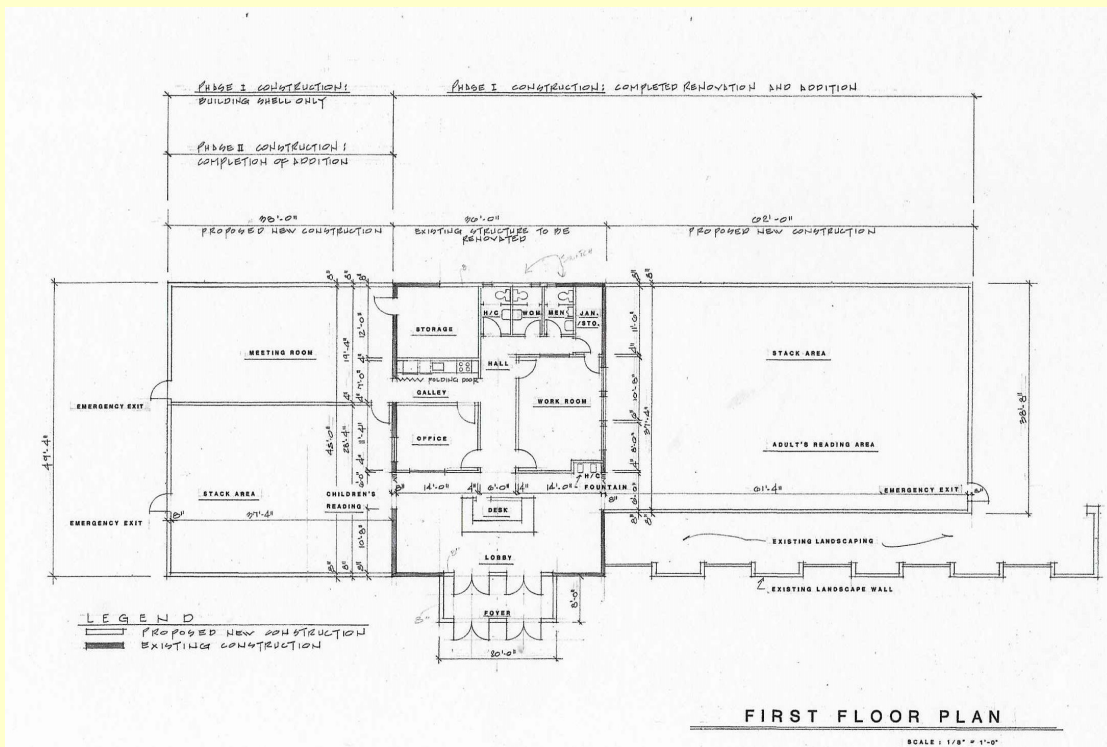


Drawings Courtesy of Richard Graham

# The History of Brielle's Library

## Brielle's New Library Building

### Architect's Drawings



Drawings Courtesy of Richard Graham



## The History of Brielle's Library



Loughran Gardens retail building starts the transition to become Brielle's new library building

Construction progresses on the Loughran Gardens retail building transition



# The History of Brielle's Library

*You are cordially invited  
to attend the  
Dedication Ceremonies  
of the new  
Brielle Public Library  
610 South Street  
at 2:00 p.m. on Sunday, April 17, 1988.  
Refreshments, entertainment and  
Open House to follow.*

\* \* \* \* \*

*Annual Meeting of the  
Brielle Library Association  
begins at 1:30 p.m.*

## The History of Brielle's Library



Brielle Music teacher Richard Carver introduces the young musicians at the library's dedication

Mayor Frank Wesolowski speaks at the library's dedication





## The History of Brielle's Library



The crowd at the library's dedication

Brielle's early librarians at the dedication (L to R): Darby Fleming, Ethel Taylor and Betty Taylor



# **The History of Brielle's Library**

## **Invitation to the Dedication of the New Reading Room**

*Brielle Public Library Association*

*Cordially invites you to*

*The Dedication of our "New Reading Room"*

*Followed by the Annual Meeting of the Library Corporation*

*With a Special Presentation*

*"Impressionist Painters of the Jersey Shore"*

*Given by Roy Pedersen of Pedersen Gallery of Lambertville, NJ*

*7:30 p.m. - Wednesday, May 30, 2001*

*Dedication Ceremonies followed by Annual Meeting and Program.*

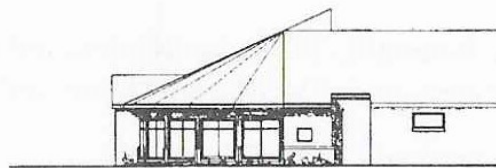
*Refreshments served.*

*RSVP by May 29, 2001 • (732) 528-9381*

# The History of Brielle's Library

## Architectural Rendition of New Reading Room

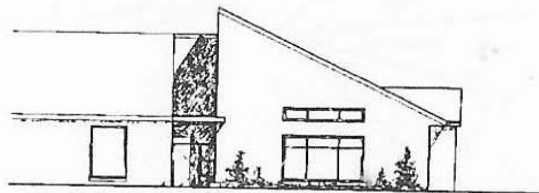
### Architectural Renditions of the Library Reading Room *Completed May 2001*



West Elevation



Southwest Elevation



Northeast Elevation



# The History of Brielle's Library

## Library's New Reading Room



Construction progresses on the Library's new reading room

Reading room dedication (L to R): Librarian Richard Bidnick, Councilwomen Ann Scott, Mayor Tucker Nicol, Councilman Leonard Lenzen & Board President Richard Matos




# The History of Brielle's Library

## 90th Anniversary Celebration: June 3rd, 2012

WELCOME TO  
THE BRIELLE PUBLIC  
LIBRARY

90<sup>TH</sup> ANNIVERSARY  
CELEBRATION

SUNDAY, JUNE 3, 2012



The Brielle Public Library  
610 South Street, Brielle, NJ 08730 732-528-9381  
www.briellepubliclibrary.org

Monmouth County Library Commissioners  
Renee B. Swartz, Chairperson  
Grace Abramov  
George S. Callas  
James S. Gray  
Nancy Grbelja  
Barbara Ruane  
Frank Wells  
Ken Scheinbaum, Monmouth County Library Director

---

Brielle Public Library Trustees 2012  
Paul Tartaglia  
Amy DePaul  
Carolyn D'Ambrosio  
Gail Williams  
Annemarie Graham  
Linda Chappa  
Gene Miller  
Paul Nolan – Brielle Council Liaison

Brielle Public Library Past Trustees  
Shirin Harman  
Greg Marotta  
Meg Farren  
Maureen Honecker  
Janet Hendricks  
Theresa Mazzeo  
Jay Feigus

**Brielle Public Library  
90<sup>th</sup> Anniversary Celebration**  
Schedule of Events  
June 3, 2012

**Proclamation and Speakers**  
1:00-1:30  
MCL Commission Member George C. Callas  
NJ State Assemblyman David P. Ribble  
Brielle Mayor Thomas Nicol  
Boro Historian John Belding  
BCLA President Paul Tartaglia

**Zoom Balloons**  
1:30-3:00

**Antique Car Show**  
1:00-4:00

**Billy Lawlor Band**  
1:30-4:00

**50/50 Drawing**  
3:30

**Refreshments**  
1:30-3:30

Best Sellers of 1922

1. If Winter Comes	A.S.M. Hutchinson
2. The Sheik	Edith M. Hull
3. Gentle Julia	Booth Tarkington
4. The Head of the House of Coombe	Frances Hodgson Burnett
5. Simon Called Peter	Robert Keable

Events/Facts of 1922

Reader's Digest magazine first published  
Newberry Medal is first presented for Children's Literature  
President Warren Harding is 1<sup>st</sup> US President to make speech on radio  
USS Langley is commissioned – Navy's first aircraft carrier  
Lincoln Memorial is dedicated  
The Tomb of Tutankhamen is discovered by Howard Carter  
Rebecca Felton of Georgia becomes first woman US Senator  
Insulin first used to treat diabetes  
Construction begins on Yankee Stadium in NY  
Girl Scout cookies and Gummi Bears make their debut  
Manasquan River Golf Club is founded

Born in 1922

Betty White, Jan. 17<sup>th</sup>  
Helen Gurley Brown, Feb. 18<sup>th</sup>  
Jack Kerouac, Mar. 12<sup>th</sup>  
Carl Reiner, Mar. 20<sup>th</sup>  
Norman Lear, Jul. 27<sup>th</sup>  
Kurt Vonnegut, Nov. 11<sup>th</sup>

Statistics of 1922

Average annual earnings - \$1,236  
Dow Jones high - 100  
Unemployment rate - 6.8%  
Life expectancy, Male 58.4, Female 61.0  
1 lb bread - \$0.12  
½ gallon of milk - \$0.28  
Buick Touring Car - \$650.00



**The History of Brielle's Library**  
**Celebrating the Library's Centennial**





# The History of Brielle's Library

## Timeline

September 1922	Mary W. Strong, President of Brielle's PTA, founds Brielle's public library
September 1922	Brielle's first library opened in the sun-pallor of Mary Strong's home, Applewood
During 1930	Borough Council voted to give Mary Strong \$250 annually to cover the library's operating costs.....previously Mary Strong covered all costs of the library
During 1949	Brielle's BOE purchased the Rankin Farm property (with the farmhouse) which adjoined the old school (current Boro Hall) The Rankin farmhouse remained idle until 1951
During 1952	The BOE leased the Rankin farmhouse to Borough Council Two rooms on the first floor were made available to the library
During 1952	When Mary Strong went on vacation in 1953, Betty Taylor was appointed temporary librarian
December 1952	Brielle's library moved to two rooms on the first floor of the Rankin farmhouse
December 12, 1953	Brielle's library celebrated its first "Open House" in the Rankin farmhouse
February 23, 1954	Mary Strong resigned. She moved to California to be near her family. She died at 98 years on 2/12/1975 in Cupertino, CA
March 8, 1954	Betty Taylor was appointed Brielle's second librarian Betty Taylor serves 18 years until 1972
June 1954	Brielle's library moved into the Assembly Hall in the old schoolhouse (current Borough Hall)
November 16, 1954	Brielle's library celebrated its second "Open House" in Assembly Hall
March 16, 1955	Brielle's library committee signed the library's "Articles of Incorporation"
During 1955	Library Budget for 1955 is \$1,500

# The History of Brielle's Library

## Timeline (Cont'd)

November 16, 1955	Brielle's library committee adopted a constitution and transitioned to a Board of Trustees
During 1972	Ethel Taylor is appointed Brielle's third librarian Ethel Taylor serves 15 years until 1987
During 1980	Library's Budget for 1980 is \$21,000
During 1985	It was decided to renovate the old showroom of Loughran Gardens for Brielle's new library Loughran Gardens was located on a large property on the corner of South Street and Union Lane
May 1987	Ground breaking takes place for the new library building The new library building will have 6,600 square feet of space, compared to 1,500 square feet at the old location in Borough Hall
February 29, 1988	Brielle's new library opens
During 1988	The 1988 Budget for the new library is \$54,194
April 17, 1988	Brielle's new library at 610 South Street was dedicated
During 1992	Library's Budget for 1992 is \$86,250
May 30, 2001	The library's new reading room celebrates its opening
September 22, 2022	Brielle's library celebrates its Centennial

# **The History of Brielle's Library**

## **Brielle's Library at Its Centennial**

Brielle's public library looks back on a century of progress and serving the community.

It has grown from an initial collection of 50 books and a complete file of Century magazines when it opened in 1922 in Mary Strong's home, Applewood, to 16,000 books. Annual circulation has grown to 17,000 volumes and membership to 2,500. It is a member of the Monmouth County Library system which extends online lending privileges and other supplementary services.

The library offers a broad array of programs for both children and adults. New innovative programs such as eSports, STEAM for kids, and Adult Author Programs continue to provide interesting and challenging activities to residents of all ages. As a result of its creativity and innovation, the library draws 11,000 patrons a month from Brielle and many adjacent towns and serves as the community center of Brielle.

Today's library leadership under the direction of Library Director Maribeth Pelly builds on the dedicated work of the early library pioneers, such as Mary Strong, Betty Taylor, and Ethel Taylor and their successors Richard Bidnick and Leslie Naughton. Brielle's public library is in good hands as it embarks on its next 100 years!



# **The History of Brielle's Library**

## **Brielle's Library Directors**

<b>1922 – 1954</b>	<b>Mary Strong</b>
<b>1954 – 1972</b>	<b>Betty Taylor</b>
<b>1972 – 1987</b>	<b>Ethel Taylor</b>
<b>1987 – 1991</b>	<b>Darby Fleming</b>
<b>1991 – 1992</b>	<b>Evalina Erbe</b>
<b>1992 – 2006</b>	<b>Richard Bidnick</b>
<b>2007 – 2008</b>	<b>Kerry DiBrienzo</b>
<b>2008 – 2010</b>	<b>Kim Rinaldi</b>
<b>2010 – 2020</b>	<b>Leslie Naughton</b>
<b>2021 – 2022</b>	<b>Janet Torsney</b>
<b>2022 to Present</b>	<b>Maribeth Pelly</b>

# The History of Brielle's Library

## Locations of Four Different Libraries



### Library Locations:

- (A) Applewood (518 Longstreet Avenue)
- (B) Rankin Farmhouse (On current lands of Brielle Elementary)
- (C) Old School House (Current Borough Hall)
- (D) Current Location (610 South Street)



**Union Landing Historical Society of Brielle**

**2022 Membership Dues**

**Please Help Us Keep in Touch!**

**Name:** \_\_\_\_\_

**Address:** \_\_\_\_\_

**Telephone # (Cell):** \_\_\_\_\_ **(Home):** \_\_\_\_\_

**E-Mail:** \_\_\_\_\_

***Please Make Check Payable to the:***

**UNION LANDING HISTORICAL SOCIETY**

**Membership Category**

Individual	\$15	___	Corporate	\$150	_____
Family	\$35	___	Life Member (One-time Payment)	\$300	_____
Sponsor	\$125	___	Other	\$	_____

\*\*\*\*\*

- I would like to:**
- ( ) Volunteer
  - ( ) Give a Presentation at a Meeting
  - ( ) Learn More about Being a Board Member
  - ( ) Be Contacted to Learn More about the Society

\*\*\*\*\*

**Mail form to:      Union Landing Historical Society**  
**Post Office Box 473**  
**Brielle, New Jersey 08730**

\*\*\*\*\*

***Thank You!!!***